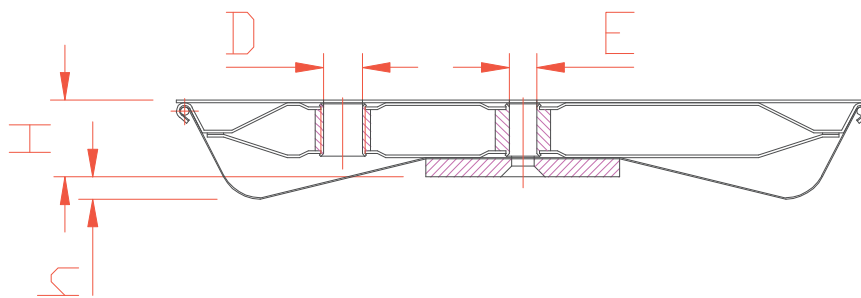
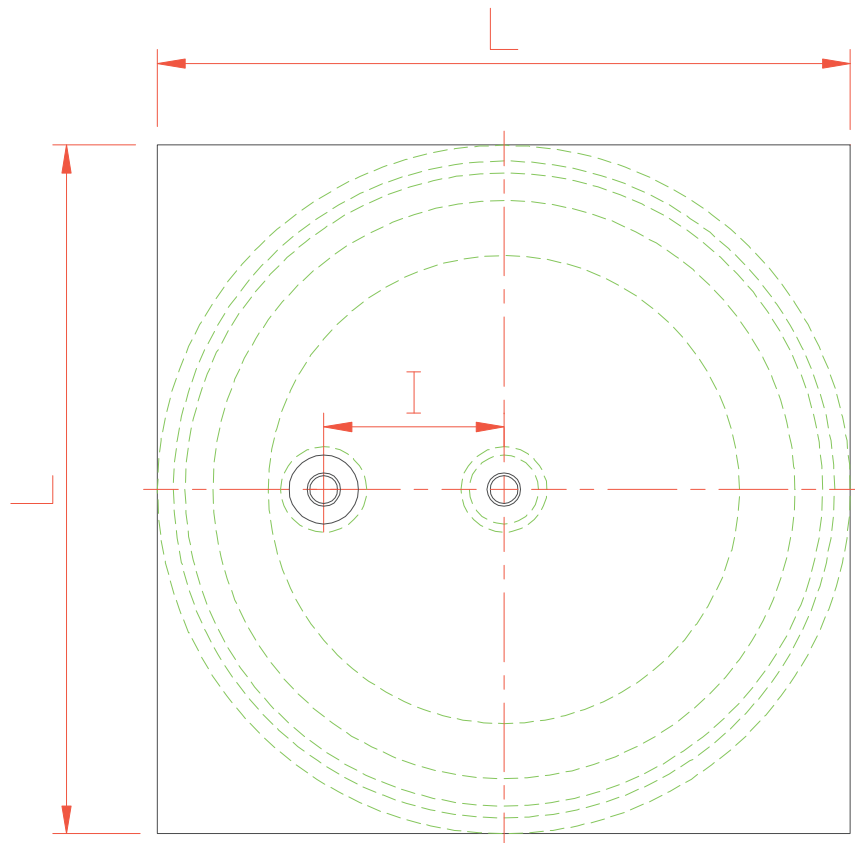


# Aircushion Type A...NS



	Diameter (mm)	Height (mm)	Airinlet	Connection Nipple (mm)	Distance Airinlet (mm)	Weight (kg)	Air Consumption (NL/min)	Capacity (kg)
TYPE	L	H	D	E	I	G		
A 25NS	250	26	1 / 4 "	10	65	1,3	80-140	300
A 30NS	300	26	1 / 4 "	10	90	1,7	100-200	500
A 40NS	400	26	1 / 4 "	10	120	2,8	130-250	1.000
A 50NS	500	26	1 / 2 "	10	150	4,3	240-450	1.800
A 70NS	700	26	1 / 2 "	10	220	6,0	400-750	3.000
A 90NS	900	26	3 / 4 "	10	270	9,3	500-1000	6.000

Technical changes reserved



[www.prexco.it](http://www.prexco.it)

[info@prexco.it](mailto:info@prexco.it)